



# National Practitioner Data Bank Resources

*June 18, 2024*

**Melissa Moore, MSW, MBA and Michelle L. Cook, PhD, MPH**  
**National Practitioner Data Bank (NPDB)**  
**Bureau of Health Workforce (BHW)**

**Vision: Healthy Communities, Healthy People**



# Agenda

- 1 NPDB Overview
- 2 NPDB Resources
- 3 Data Resources
- 4 Discussion and Q&A

# Welcome – Housekeeping



- ▶ Presentation materials
- ▶ Q&A pod
- ▶ Chat pod
- ▶ NAMSS CE credits
- ▶ Q&A
- ▶ Survey

# NPDB Overview



# NPDB Overview

## History

Created by Congress in 1986 to assist organizations in making well-informed credentialing, privileging, and licensing decisions

## Mission



**Protect the  
public**



**Improve  
Health Care  
Quality**

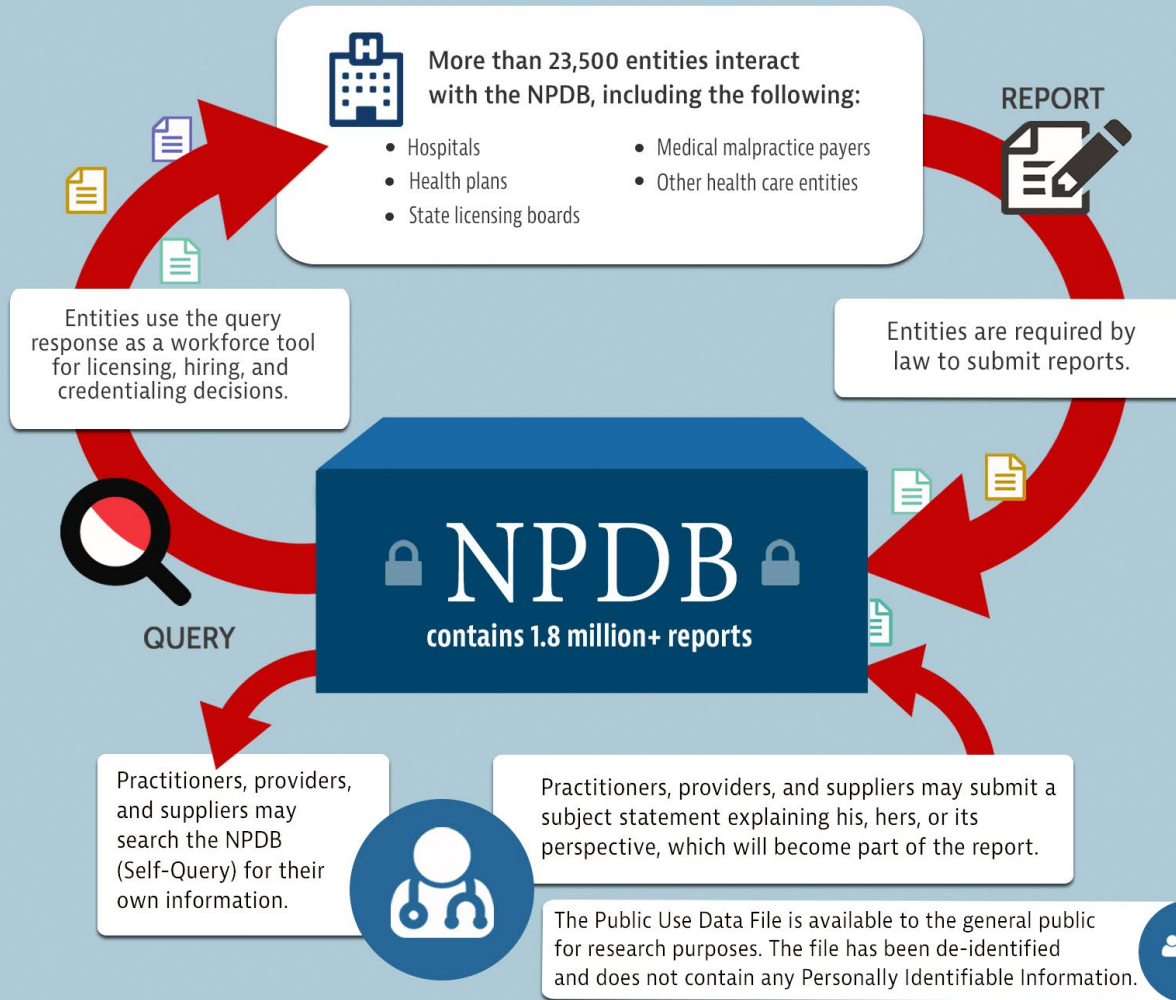


**Deter Health  
Care Fraud and  
Abuse**



# HOW THE NPDB WORKS

Only registered entities have access to reports.



# WHAT'S IN THE NPDB?

~1.25 million

## Adverse Action Reports

Certain adverse licensure, certification, and clinical privileges actions taken by state and federal licensing and certification authorities, hospitals, and other health care organizations.

~507,000

## Medical Malpractice Payment Reports

Payments made for the benefit of a health care practitioner relating to a written claim or judgment for medical malpractice.

~43,000

## Judgment or Conviction Reports

Health care-related civil judgments or criminal convictions taken in a federal or state court.

~ means approximate  
Cumulative data as of Dec. 2023

In 2023  
the NPDB

provided  
12.5 million+  
query responses

and received  
65,000+  
new reports

Data for Jan.-Dec. 2023



# NPDB Core Functions

---

- Entity Registration, Renewal, and Maintenance
  - User Account Management
  - Administrator Functions
- Reporting
  - Compliance
  - Dispute Resolution
- Querying
  - Matching Algorithm
  - Payment Processing



# NPDB Resources





# NPDB Website



## Multi-Factor Authentication

How to Use Multi-Factor Authentication, or MFA, for the NPDB (video - 3:10)  
This video explains how to use MFA to sign in to your NPDB user account.

### Self-Query

Order a search of your information for \$3 to receive an online response. For an additional \$3, receive a mailed response.

[Sign in to Start or View a Self-Query](#)

### Check Your Report

Received a letter notifying you of a report? View and respond to the report.

[Sign in to View Your Report](#)

## For Organizations

- [Registering with the NPDB](#)  
How an organization can apply to access NPDB information.
- [Changing Your Data Bank Administrator](#)  
What to do if your Data Bank administrator is leaving your organization.
- [Querying the NPDB](#)  
Start using Continuous Query within your organization.
- [Your Organization](#)  
Receive organization-specific reporting and querying guidance.

## Popular Resources

- [NPDB Guidebook](#)  
The guidebook serves as a policy manual for the NPDB.
- [Events](#)  
Learn about upcoming webcasts and watch recordings of past events.
- [NPDB Infographics](#)  
Educational guides that explain NPDB concepts in a visual, easy-to-understand format.
- [Policy Corner](#)  
A resource for your questions about the laws and regulations governing NPDB operations.

## News

- February 29, 2024**  
We updated [NPDB Public Use Data File \(PUF\)](#) and the [Data Analysis Tool \(DAT\)](#). The PUF and DAT now include data from September 1, 1990, through December 31, 2023.
- February 14, 2024**  
The [February Insights](#) details how to start using MFA to stop the need to reset your password. It clarifies the difference between state licensure actions and government administrative actions. And defines what information you must include in a report.

[More News](#)



### Research & Data

[About](#) | [Data Analysis Tool](#) | [Public Use Data File](#)

### Compliance

[About](#) | [Compliance Status](#) | [Status By State](#)

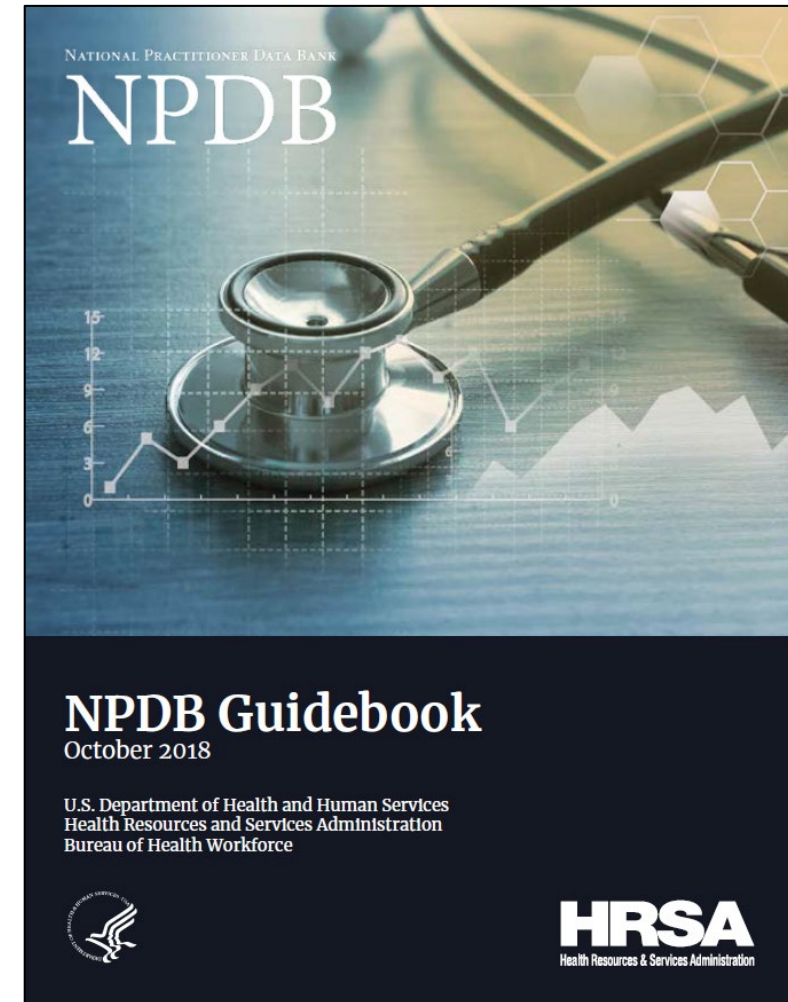
### Credentiaing Software (QRXS)

[About](#) | [Downloads & Documentation](#) | [Codes](#)



# NPDB Guidebook

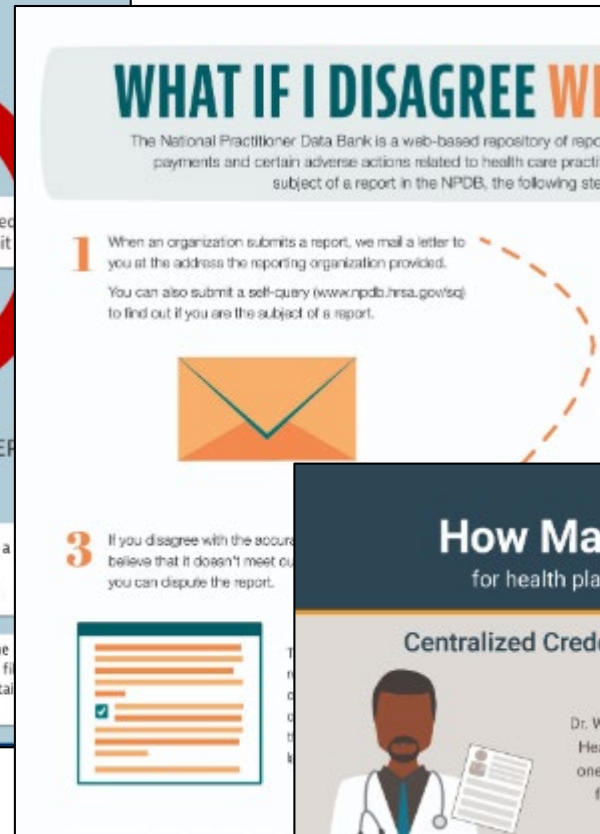
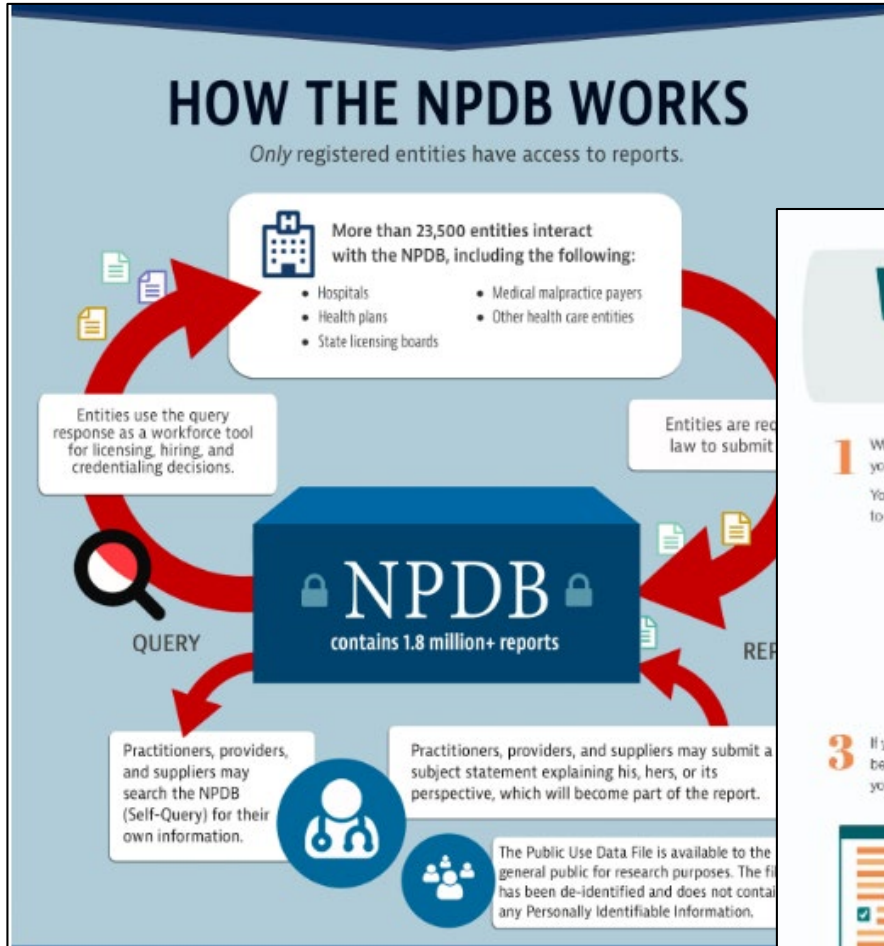
NPDB's policy manual containing detailed information to help health care entities understand and comply with requirements.



NPDB Guidebook: <http://www.npdb.hrsa.gov/resources/aboutGuidebooks.jsp>



# NPDB Infographics

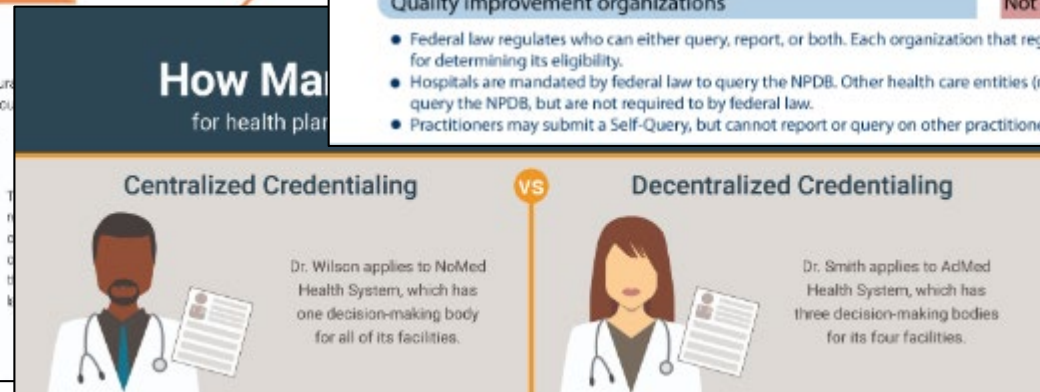


## NPDB: Who Can Report and Query?

[www.npdb.hrsa.gov](http://www.npdb.hrsa.gov)

ENTITY TYPES	REPORT	QUERY
Hospitals	Required	Required
Health plans	Required	Optional
Health care entities with formal peer review	Required	Optional
Medical malpractice payers	Required	Not Authorized
State licensing and certification agencies	Required	Optional
State agencies administering or supervising state programs	Required	Optional
State law enforcement agencies or fraud control units	Required	Optional
Federal licensing and certification agencies	Required	Optional
Agencies administering federal health care programs	Required	Optional
Federal law enforcement officials and agencies	Required	Optional
Professional societies with formal peer review	Required	Optional
Peer review organizations	Required	Not Authorized
Private accreditation organizations	Required	Not Authorized
Quality improvement organizations	Not Authorized	Optional

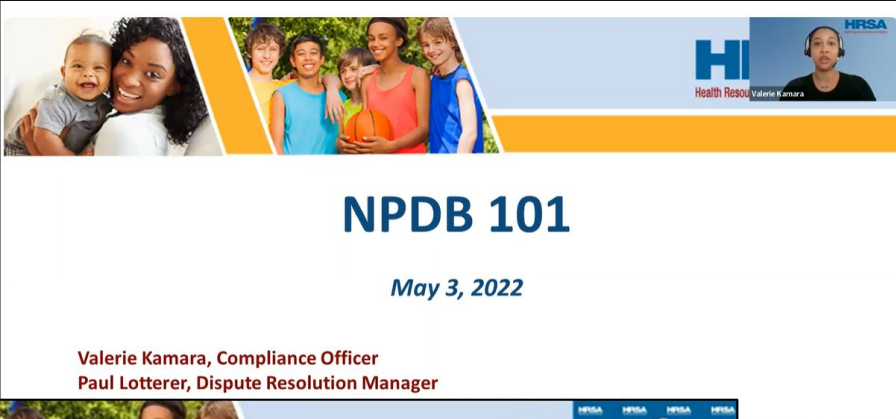
- Federal law regulates who can either query, report, or both. Each organization that registers with the NPDB is responsible for determining its eligibility.
- Hospitals are mandated by federal law to query the NPDB. Other health care entities (marked as "Optional") generally may query the NPDB, but are not required to by federal law.
- Practitioners may submit a Self-Query, but cannot report or query on other practitioners.



# NPDB Webinars

The NPDB hosts webinars to share information, to learn from health care communities, and to talk with NPDB users.

- NPDB 101
- Querying
- Clinical Privileges Reporting
- Data Bank Administrator

The banner for the NPDB 101 webinar features a collage of diverse people on the left and a small inset photo of Valerie Kamara on the right. The HRSA logo is in the top right corner.

**NPDB 101**  
*May 3, 2022*

Valerie Kamara, Compliance Officer  
Paul Lotterer, Dispute Resolution Manager

The banner for the NPDB Data Bank Administrator Training webinar features a collage of diverse people on the left and a small inset photo of Samuel Smith on the right. The HRSA logo is in the top right corner.

**NPDB Data Bank Administrator Training**  
**February 22, 2023**

Samuel Smith, Customer Service Center Manager  
William (Bill) West, Compliance Officer  
Division of Practitioner Data Bank, Bureau of Health Workforce (BHW)



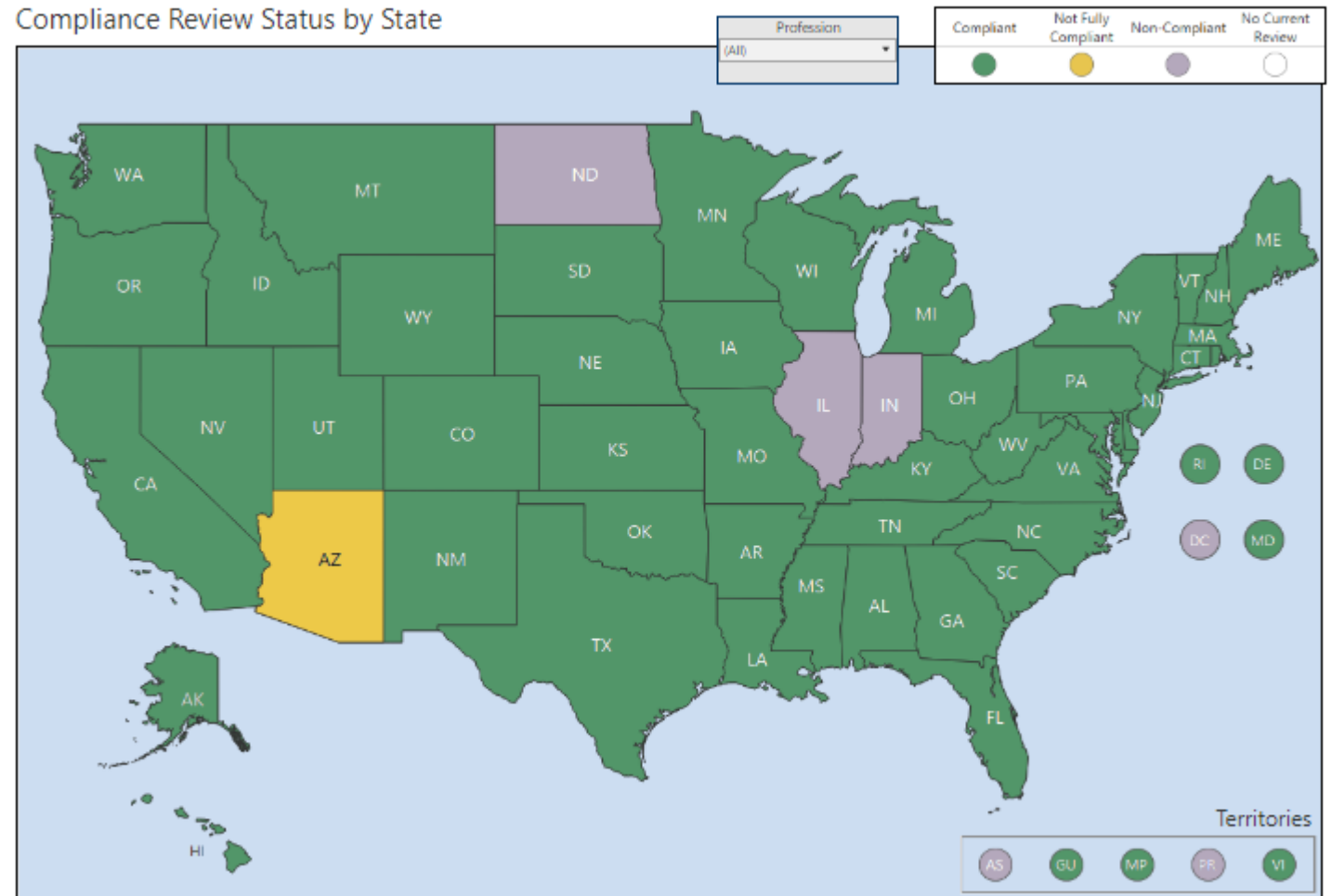
Webinars Link: [https://www.npdb.hrsa.gov/community\\_n\\_education/outreachEvents.jsp](https://www.npdb.hrsa.gov/community_n_education/outreachEvents.jsp)



# NPDB Compliance Map

Compliance reviews of state board entities for specific fields of licensure, and promotes entity attestation through outreach and education

- State board compliance reviews
- Enforcement inquiries



Compliance Map Link: <https://www.npdb.hrsa.gov/resources/npdbstats/npdbMap.jsp>



# Data Resources



# Confidentiality and Data Use Agreements

## Data Analysis Tool (DAT)

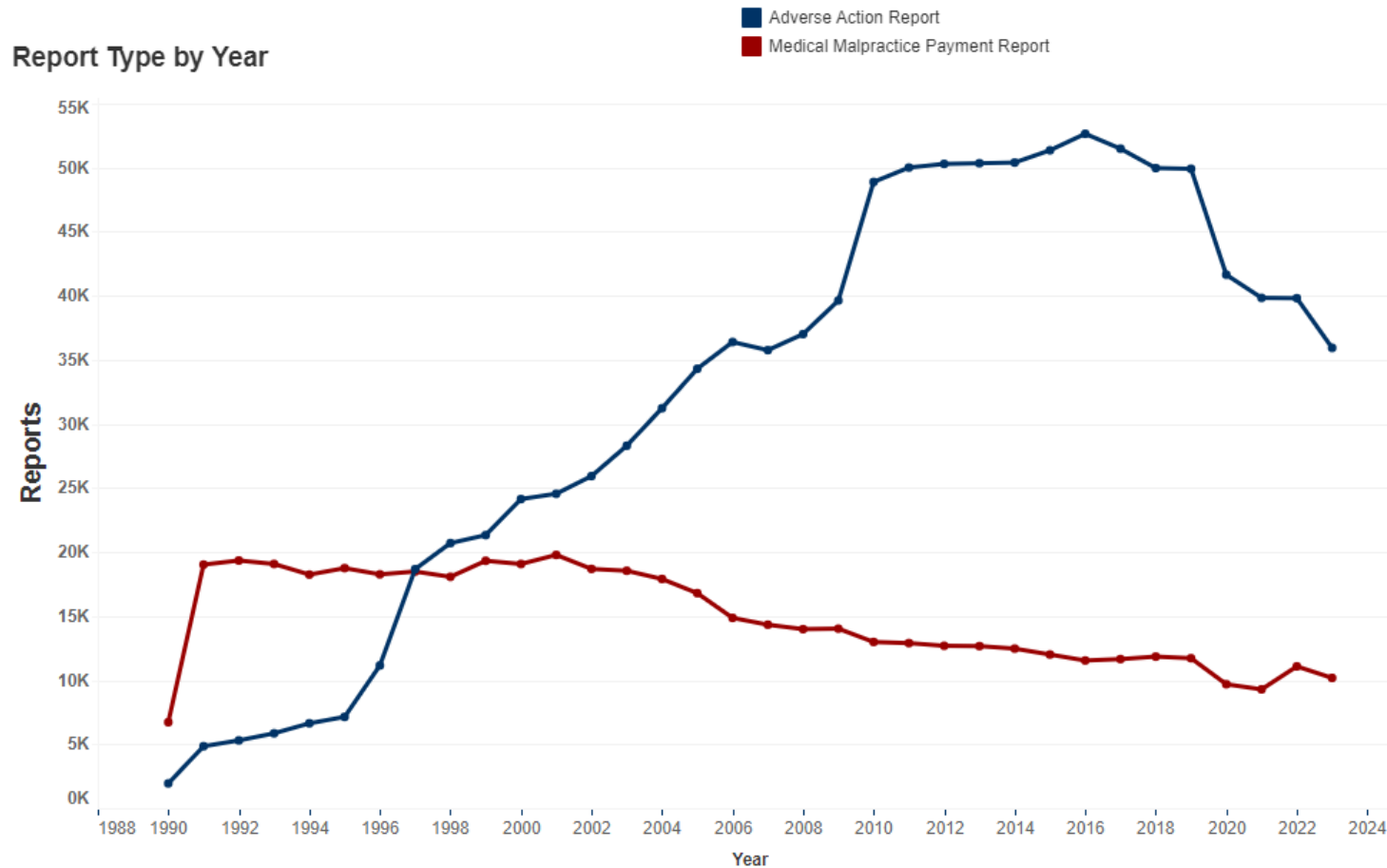
- Not identifiable
- Designed for statistical reporting and analysis only
- Agreeing to:
  - Not to use the dataset alone or in combination of other data to identify any individual or entity
  - Only to be used for statistical reporting and analysis

## Public Use Data File (PUF)

- Not identifiable
- Designed for statistical reporting and analysis only
- Agreeing to:
  - Not to use the dataset alone or in combination of other data to identify any individual or entity
  - Upon HRSA request, return, delete, or permanently dispose of all copies of the data in their possession
  - When reporting, disclosing, or posting data, not identify any individual or entity
  - If reposting the dataset or a subset, require third-party users of the data to adhere to the same conditions



# Data Analysis Tool (DAT) Overview



- History:
  - 2012: DAT created
  - 2018: DAT enhanced to include more features with dynamic data
- Includes:
  - Adverse Action Reports (AARs)
  - Medical Malpractice Payment Reports (MMPRs)
  - Practitioner Count (with reports)
- 1990 – 2023
- Updated quarterly
- Aggregated data

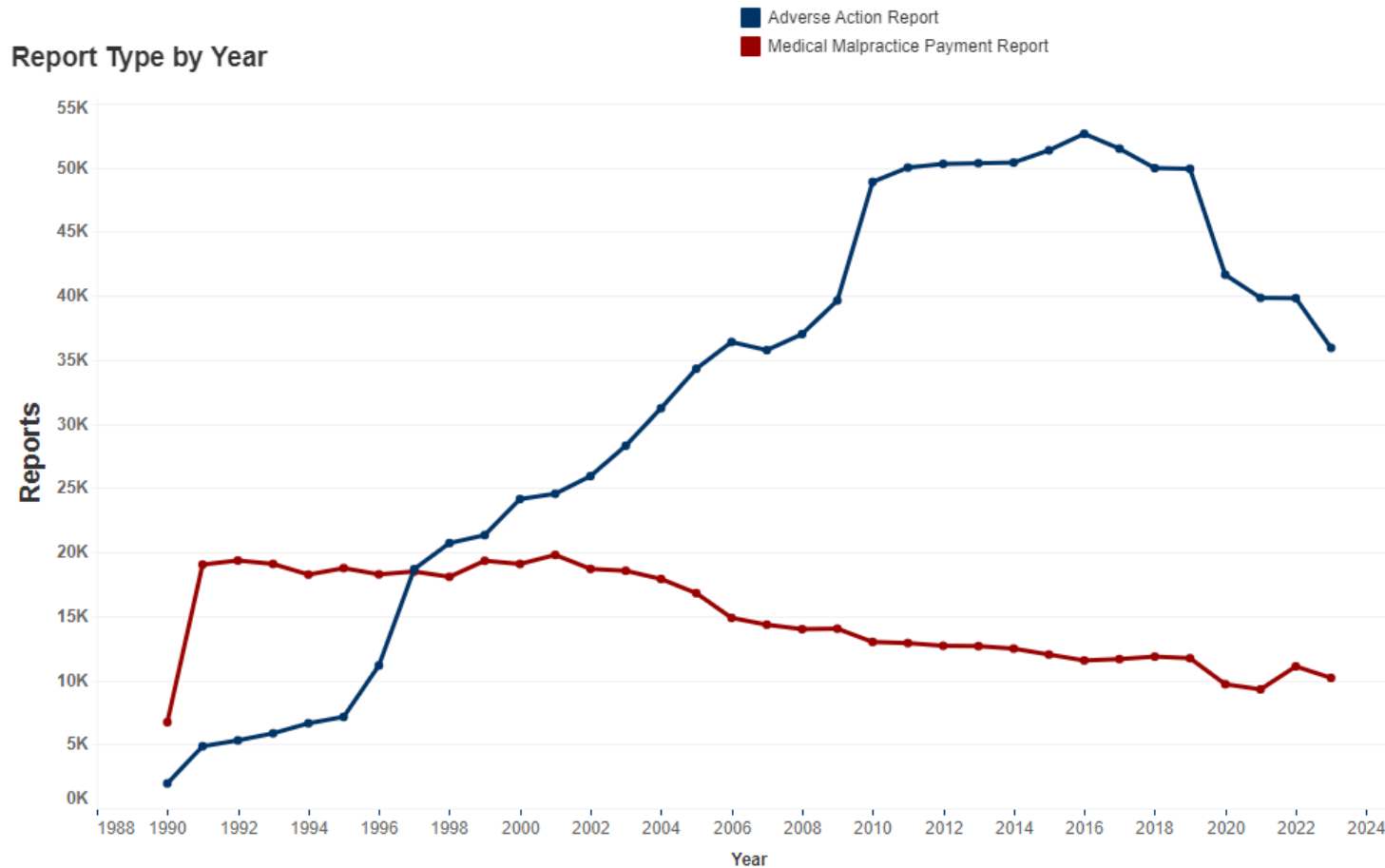


DAT Link: <https://npdb.hrsa.gov/analysistool/>





# Data Question 1



What caused the increase in Adverse Action Reports in 2010?

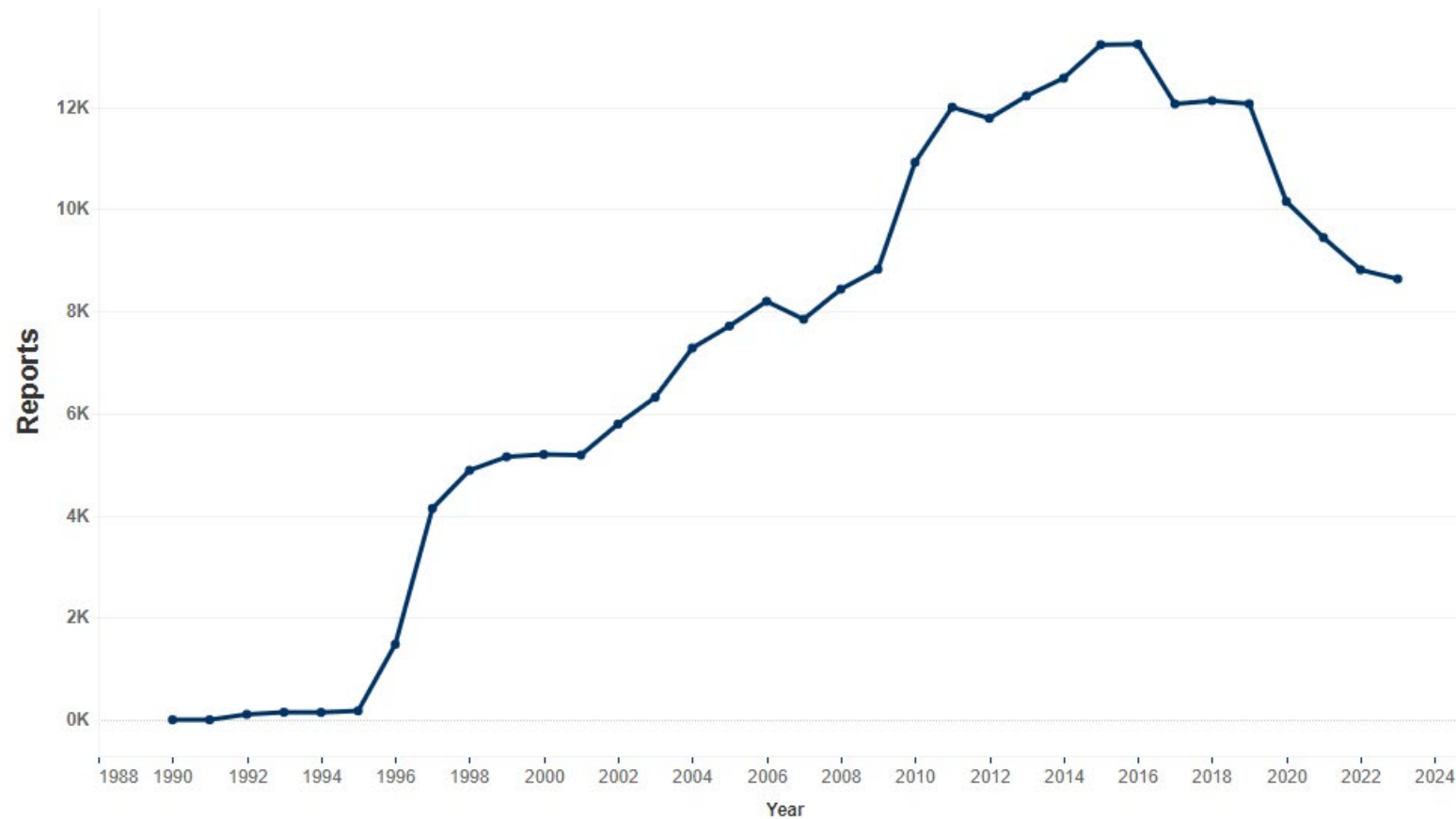
- a) A few licensing agencies caught up on their reporting to the NPDB.
- b) NPDB started to accept licensure actions against health care entities and health care practitioners (other than physicians and dentists). [Correct Answer]
- c) The NPDB and the Healthcare Integrity and Protection Data Bank (HIPDB) merged.



DAT Link: <https://npdb.hrsa.gov/analysistool/>



# DAT Demo – RN Licensure AARs



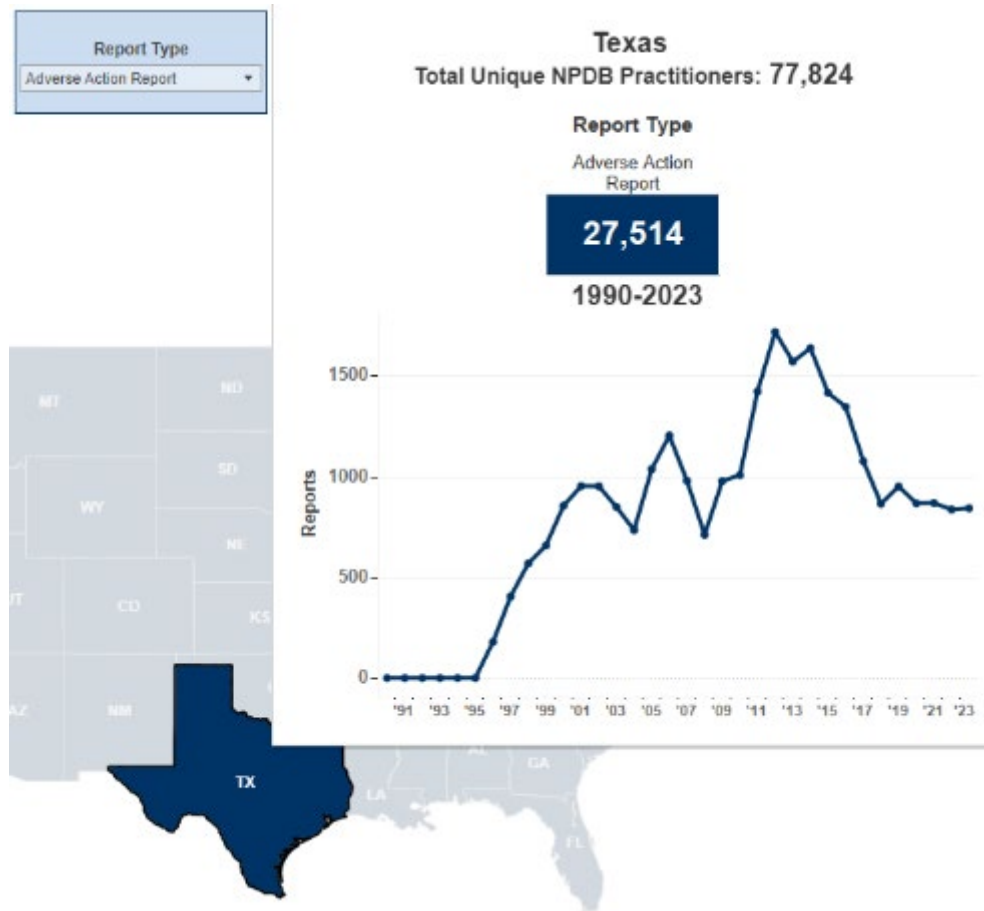
- Licensure AARs increased until 2016.
- A small decrease in reporting was noticed in 2017-2019.
- A larger drop during the pandemic.



DAT Link: <https://npdb.hrsa.gov/analysistool/>



# DAT Demo – RN Licensure AARs



- Total unique NPDB RNs in Texas: 21,624
- Total RN licensure AARs in Texas: 27,514
- Pattern peaks earlier (2012) and decreased earlier (2018)




DAT Link: <https://npdb.hrsa.gov/analysistool/>



# DAT Demo – RN Licensure AARs by State and Year

	Washington	West Virginia	Wisconsin	Wyoming	Puerto Rico	Other Territories	Armed Forces	Total
2006	155	77	147	13	3	0	0	8,194
2007	143	111	146	7	3	0	0	7,842
2008	181	88	138	4	0	0	0	8,431
2009	195	115	99	13	2	0	0	8,820
2010	169	73	213	54	10	0	0	10,916
2011	208	105	282	59	11	0	0	11,995
2012	184	101	183	49	6	4	0	11,777
2013	223	119	163	55	15	0	0	12,214
2014	216	138	186	43	6	7	0	12,563
2015	226	104	263	61	1	3	0	13,217
2016	171	69	194	45	0	5	0	13,229
2017	123	109	188	79	0	5	0	12,059
2018	133	74	168	41	0	0	0	12,122
2019	163	79	197	50	0	3	0	12,061
2020	146	61	244	47	0	1	0	10,148
2021	149	50	267	44	0	0	0	9,441
2022	117	51	250	45	0	4	0	8,811
2023	143	55	259	30	0	3	0	8,632
<b>Total</b>	<b>4,203</b>	<b>1,947</b>	<b>4,326</b>	<b>843</b>	<b>63</b>	<b>35</b>	<b>0</b>	<b>246,167</b>

Export CSV 

**Columns (Graph)**

- State (Bar)
- Year (Line)
- Practitioner Type (Bar)
- Report Type (Bar)
- Action Type / Malpractice Payment Range (Bar)

**State**  
 (All) ▼

**Practitioner Type**  
 Nurse - Registered Nurse ▼



DAT Link: <https://npdb.hrsa.gov/analysistool/>



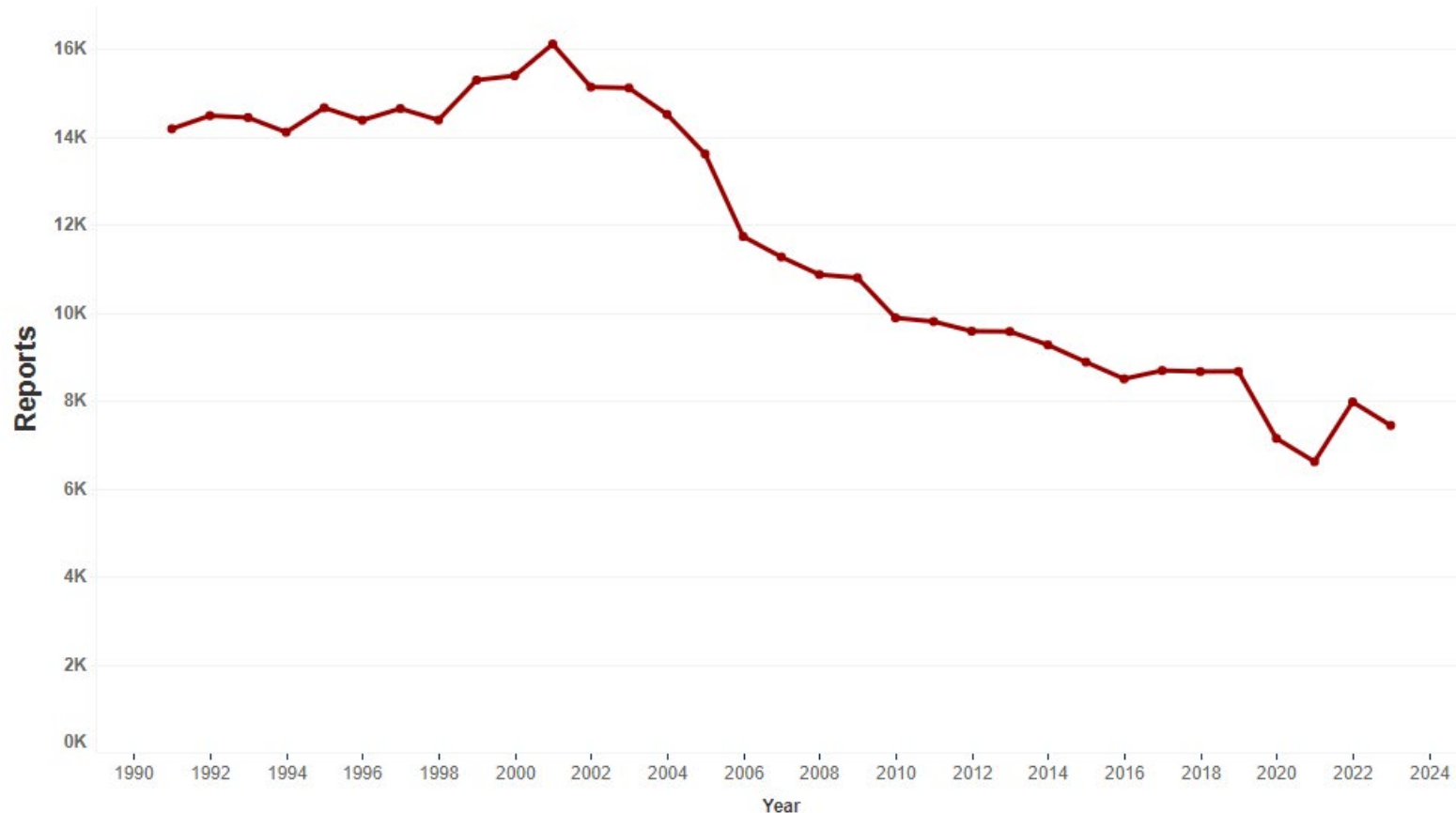
# Data Question 2

Medical malpractice payments made on behalf of hospitals are required to be reported to the NPDB.

- a) True
- b) False



# DAT Demo – Physician MMPRs



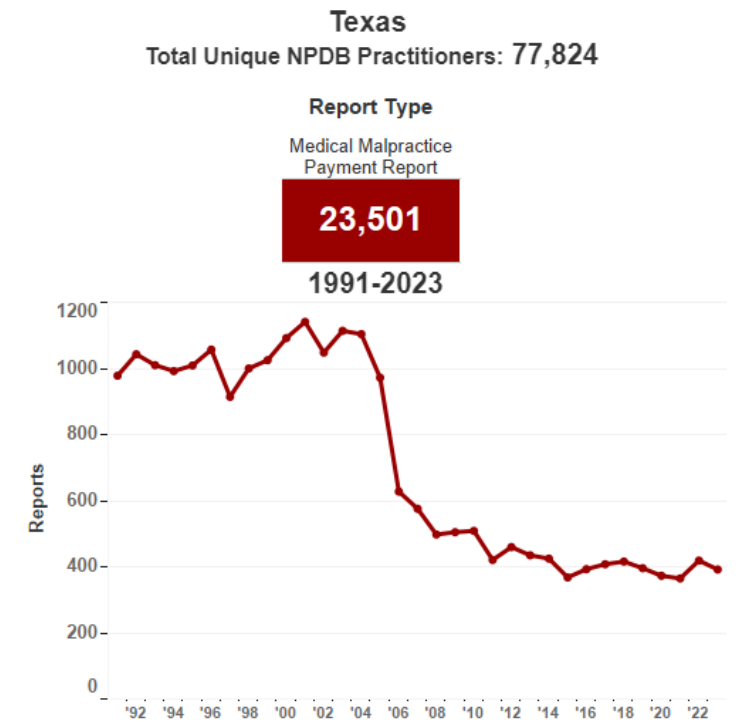
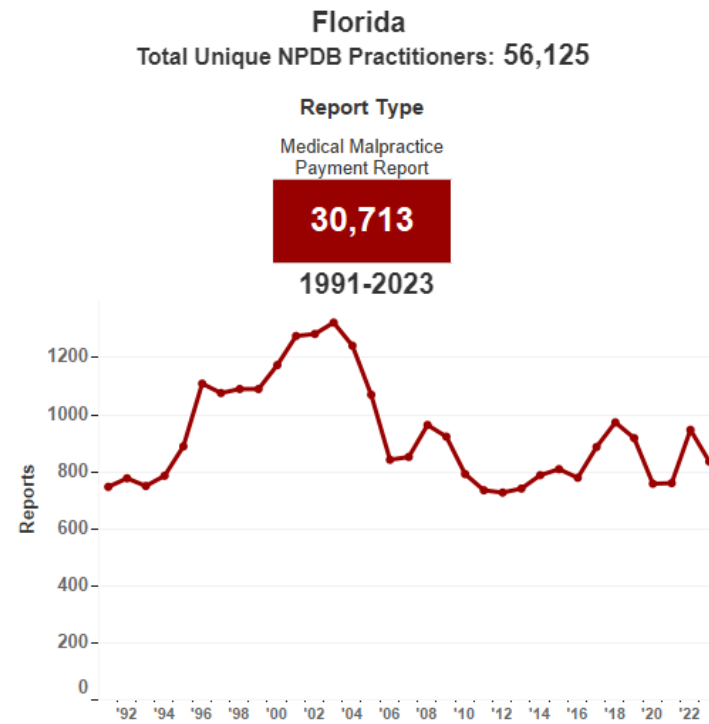
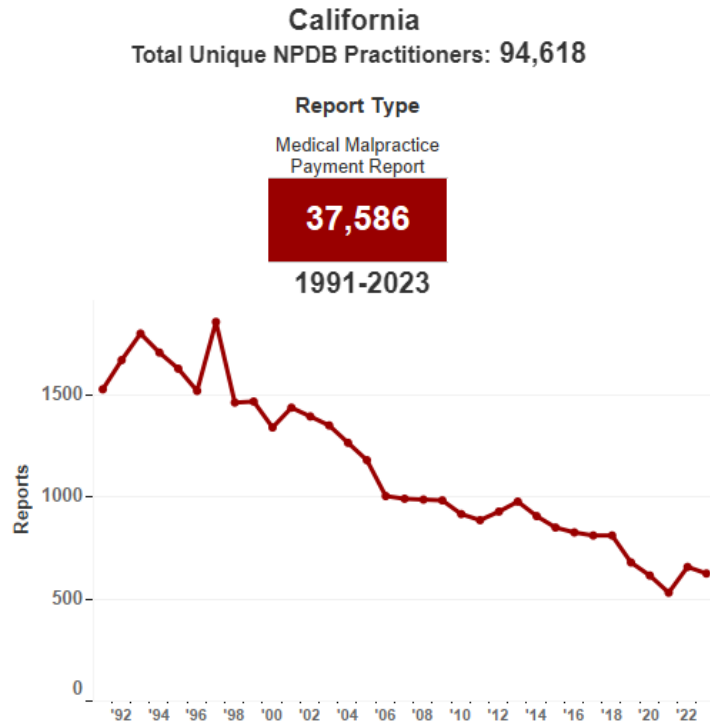
- Physician MMRs have been on the decline since 2001.
- Fewer physician MMRs were submitted in 2020 and 2021.



DAT Link: <https://npdb.hrsa.gov/analysistool/>



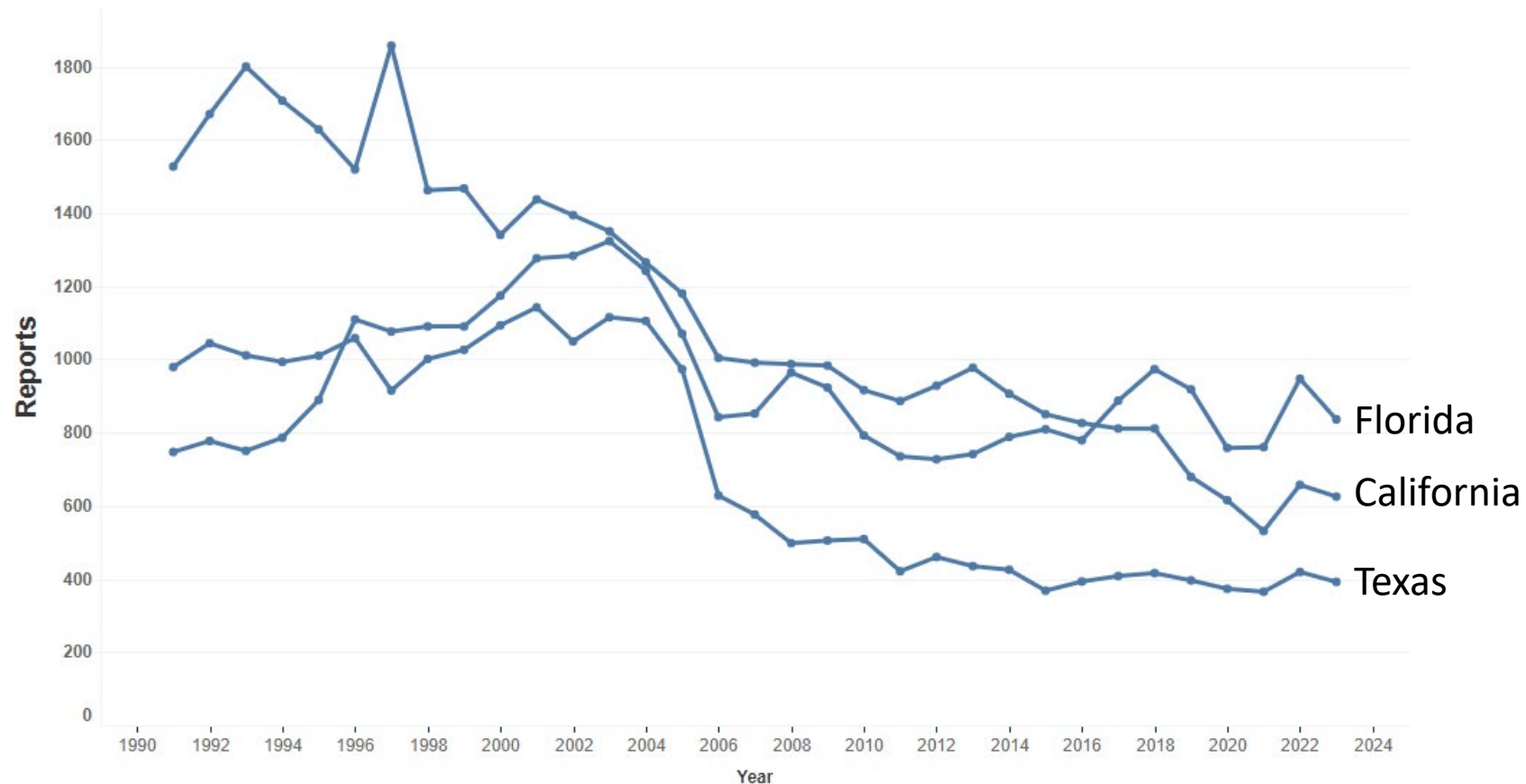
# DAT Demo – Physician MMPRs Among States



DAT Link: <https://npdb.hrsa.gov/analysistool/>



# DAT Demo – Physician MMPRs Among States



DAT Link: <https://npdb.hrsa.gov/analysistool/>





# DAT Demo – Physician MMPRs Among States

## Report Detail Table

Display Value

Report Counts ▼

Malpractice  
Inflation Adjusted

No ▼

		2016	2017	2018	2019	2020	2021	2022	2023	Total
<b>State</b>	California	26	811	811	679	615	531	657	625	37,586
	Florida	79	887	973	918	758	760	947	836	30,713
	Texas	93	408	416	396	373	365	419	392	23,501
<b>Total</b>		98	2,106	2,200	1,993	1,746	1,656	2,023	1,853	91,800



DAT Link: <https://npdb.hrsa.gov/analysistool/>



# DAT Demo – Physician MMPRs Among States

## Report Detail Table

Display Value

Dollar Amounts (\$M) ▾

Malpractice  
Inflation Adjusted

No ▾

		2016	2017	2018	2019	2020	2021	2022	2023	Total
<b>State</b>	California	72	\$223.84	\$246.59	\$180.94	\$179.23	\$211.14	\$201.19	\$224.02	\$7,022.65
	Florida	77	\$219.08	\$311.96	\$315.49	\$239.52	\$237.09	\$318.64	\$295.13	\$7,967.86
	Texas	13	\$89.35	\$98.28	\$108.52	\$87.43	\$79.85	\$108.33	\$92.24	\$4,600.20
<b>Total</b>		161	\$532.27	\$656.83	\$604.96	\$506.18	\$528.08	\$628.17	\$611.39	\$19,590.71



DAT Link: <https://npdb.hrsa.gov/analysistool/>



# DAT Demo – Physician MMPRs Among States

## Report Detail Table

Display Value

Dollar Amounts (\$M) ▾

Malpractice  
Inflation Adjusted

Yes ▾

		2016	2017	2018	2019	2020	2021	2022	2023	Total
<b>State</b>	California	30	\$277.63	\$297.75	\$215.20	\$210.67	\$231.10	\$206.84	\$224.02	\$10,767.36
	Florida	92	\$271.66	\$376.60	\$375.02	\$281.21	\$262.17	\$327.34	\$295.13	\$12,064.84
	Texas	29	\$110.97	\$118.67	\$128.84	\$102.09	\$88.63	\$111.01	\$92.24	\$7,545.27
<b>Total</b>		01	\$660.26	\$793.03	\$719.06	\$593.96	\$581.91	\$645.20	\$611.40	\$30,377.48

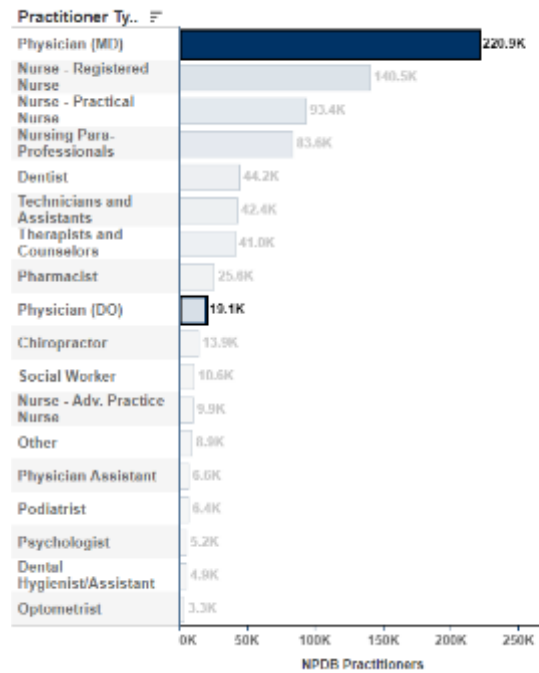


DAT Link: <https://npdb.hrsa.gov/analysistool/>

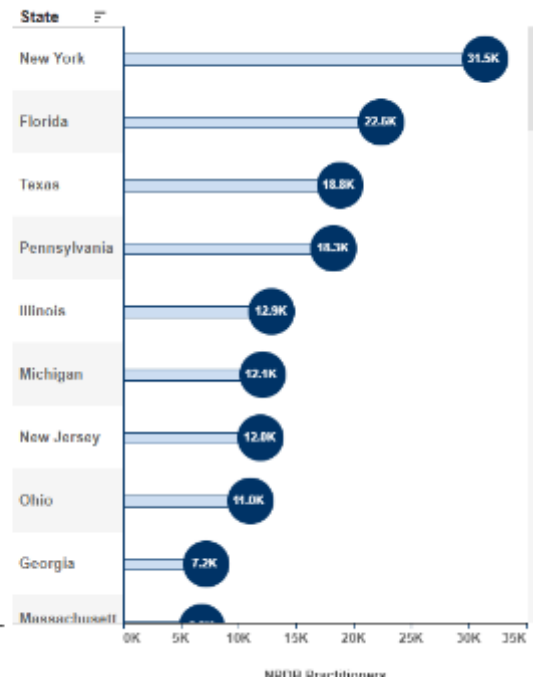


# DAT Demo – NPDB Practitioners

NPDB Practitioners by Practitioner Type



NPDB Practitioners by State



- Counts of unique practitioners in the NPDB.
- New York, Florida, and Texas have the highest number of unique physicians reported to the NPDB.
- NPDB does not have the universe of all practitioners.



DAT Link: <https://npdb.hrsa.gov/analysistool/>



# Public Use Data File (PUF) Overview



- Report-level raw data
- AARs
  - Adverse action classification
  - Basis of action codes
  - Effective year
  - Adverse action length
- MMPRs
  - Malpractice allegation
  - Total payment
  - Inpatient/Outpatient
  - Year of act/omission
- General practitioner information
  - Work/Home state
  - Field of licensure



PUF Data Link: <https://npdb.hrsa.gov/resources/publicData.jsp>

# PUF Tips and Tricks

---

## DO:

- Read the documentation
- Read or listen to the provided resources (e.g., NPDB Guidebook)
- Learn the state statutory and regulatory environment
- Use appropriate software (e.g., SAS, SPSS, and R)
- Remember the dataset is report-based, but researchers will know when multiple reports exist on a specific practitioner

## DO NOT:

- Open in Excel
- Use the dataset alone or in combination of other data to identify any individual or entity (against data use agreement)
- Assume all states operate the same way



# NPDB Research Support



- NPDB Research Team
  - Harnam Singh, PhD
  - Jiaying Hua, MS
  - Michelle L. Cook, PhD, MPH
- Research proposal process
- Inbox to reach the research team with questions:  
[dpdbdatarequests@hrsa.gov](mailto:dpdbdatarequests@hrsa.gov)



# NPDB Resources

- Website: [www.npdb.hrsa.gov](http://www.npdb.hrsa.gov)
- [Help Center](#)
- [Guidebook](#)
- [Codes for Reporting and Querying](#)
- [Infographics](#)
- [Recordings of Webinars](#)
- [NPDB Insights](#)
- [Legislation & Regulations](#)
- [Statistical Data & Research Tools](#)





# Open Forum and Q&A

---



# Contact Us

---

Melissa Moore, MSW, MBA

Deputy Director

301-443-7229

[MMoore1@hrsa.gov](mailto:MMoore1@hrsa.gov)

Michelle L. Cook, PhD, MPH

Social Scientist

301-443-8911

[MCook@hrsa.gov](mailto:MCook@hrsa.gov)

National Practitioner Data Bank

Bureau of Health Workforce (BHW)

Health Resources and Services Administration (HRSA)

[www.npdb.hrsa.gov](http://www.npdb.hrsa.gov)



# Connect with HRSA

Learn more: [HRSA.gov](https://www.hrsa.gov)

Sign up for HRSA eNews:



Follow us:

